

# First Responder Naloxone Leave Behind Toolkit



TEAM   
KENTUCKY®

CABINET FOR HEALTH  
AND FAMILY SERVICES

# Introduction

## Brief explanation of the Naloxone Leave Behind (NLB) Program



The Naloxone Leave Behind (NLB) program is an innovative public health initiative designed to equip individuals at risk of experiencing or witnessing an opioid overdose with naloxone, a life-saving medication that can reverse the effects of an overdose. Under this program, first responders, such as emergency medical services (EMS) personnel, distribute naloxone kits to individuals who have experienced a non-fatal overdose, as well as to their friends, family members, or bystanders who may be present. By providing naloxone and brief training on its administration,

the NLB program empowers community members to act swiftly in critical situations, reducing the risk of fatal overdoses and promoting timely interventions.

## Importance of first responder distribution of naloxone

First responders play a critical role in the prevention of opioid overdose fatalities. Naloxone is a life-saving medication that is both safe and easy to administer, requiring minimal training for effective use. The strategic distribution of naloxone by first responders is essential because those who are most likely to benefit from naloxone access—individuals at risk of overdose and their loved ones—are often present in private residences where overdoses commonly occur.



When an overdose is reversed by laypeople or bystanders, it typically takes place in these home settings, where friends or family members of the individual at risk are already on the scene.

These individuals are often in the best position to act quickly and administer naloxone within the crucial first five minutes of an overdose incident. Ensuring that naloxone is readily available at these critical moments not only improves patient outcomes but also reduces the overall impact on healthcare and emergency response systems.



Click on each resource in the following pages to visit the link.

# KBEMS Approved Leave Behind Naloxone Protocol

[KBEMS Website](#)

[Leave Behind Naloxone protocol 7.31.24](#)

## Leave Behind Naloxone Protocol



### INDICATION

- Any patient with known or suspected opioid overdose, history of opioid use, risk for opioid overdose, or person who requests opioid overdose antidote (naloxone) kit.
- Any EMS provider may use this protocol

### CONTRAINDICATION

None per se

### ASSESSMENT/ TREATMENT GUIDELINES

Each service's individual kit selection and the availability of certain types of kits may vary. It is the responsibility of the service to provide specific training on the use of each kit's specific contents and use of the contents.

### GENERAL INSTRUCTIONS

- Naloxone kits may be given to anyone who is at risk for overdose, who may witness an overdose, or who requests a kit.
- Every effort should be made to give a naloxone kit any patient who has been revived with naloxone
- Naloxone kits should be left with the patient or bystander even if the patient is transported to the hospital
- Instruct the recipient on indications for use of intranasal naloxone
- Advise the recipient to carry the kit with them and have it handy for use in case they witness an overdose
- Give the recipient information on naloxone information, such as on the following sheet (free to print and distribute.) Advise the recipient that they are allowed to have it, and that if they use it to help a person who has overdosed they are protected by Kentucky's laws.

# KBEMS Leave Behind Naloxone Protocol

## NALOXONE INFORMATION

### **IF YOU THINK SOMEONE HAS OVERDOSED**

-If the person is not waking up when you shake them and you suspect an overdose, give naloxone and immediately call 911. Turn the person on their side. Stay with the person until EMS arrives.

-If the person is not waking up and not breathing normally, call 911 and start chest compressions. Push as hard as you can with both hands in the center of the chest about 2 times a second. If the person begins to wake up, give naloxone. Keep going until the person wakes up or EMS arrives.

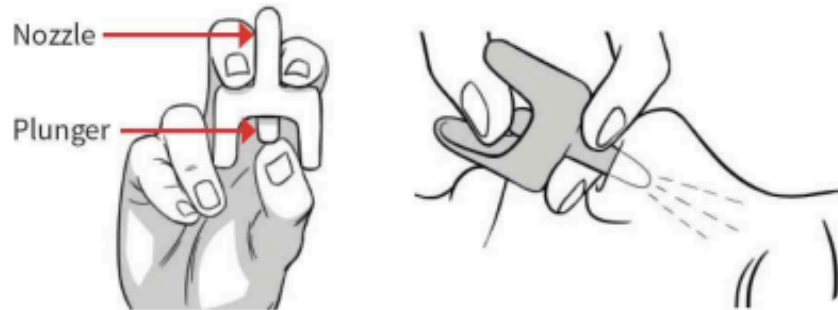
### **HOW TO GIVE SOMEONE NALOXONE**

-Quickly position the person on their back, or turn their head so you can reach their face.

-Insert the nozzle of the device into the nose until your fingers touch their nose.

-Push the plunger firmly with your thumb.

-If the person doesn't wake up in the next 3-4 minutes, give another dose in the other nostril using a second device.



### **INFORMATION ABOUT NALOXONE**

Overdoses from drugs like heroin, fentanyl, morphine, and oxycodone (called opioids) cause the person to lose consciousness and stop breathing adequately, sometimes resulting in the person's death. Naloxone is an antidote medication that is the antidote those drugs. In Kentucky, anyone can carry and use (administer) naloxone to a person they suspect has overdosed, and you are protected by Kentucky's laws if you use it to try to help someone who has overdosed.

Naloxone is a very safe medication to give, and if the person did not actually overdose on an opioid medication it will not affect them. Naloxone given through the nose takes between 5-8 minutes to take effect. Naloxone only works on the specific class of drugs called *opioids*. Effects of other drugs such as cocaine, sedatives, alcohol, or THC will not be helped with naloxone.

Sometimes a person will experience withdrawal symptoms when they are given naloxone; these will be temporary and will go away, usually in less than an hour. EMS can help by giving medications to help these symptoms, so calling 911 can help the person feel better.

***Withdrawal symptoms are uncomfortable, but the person will die if you don't give them naloxone.***

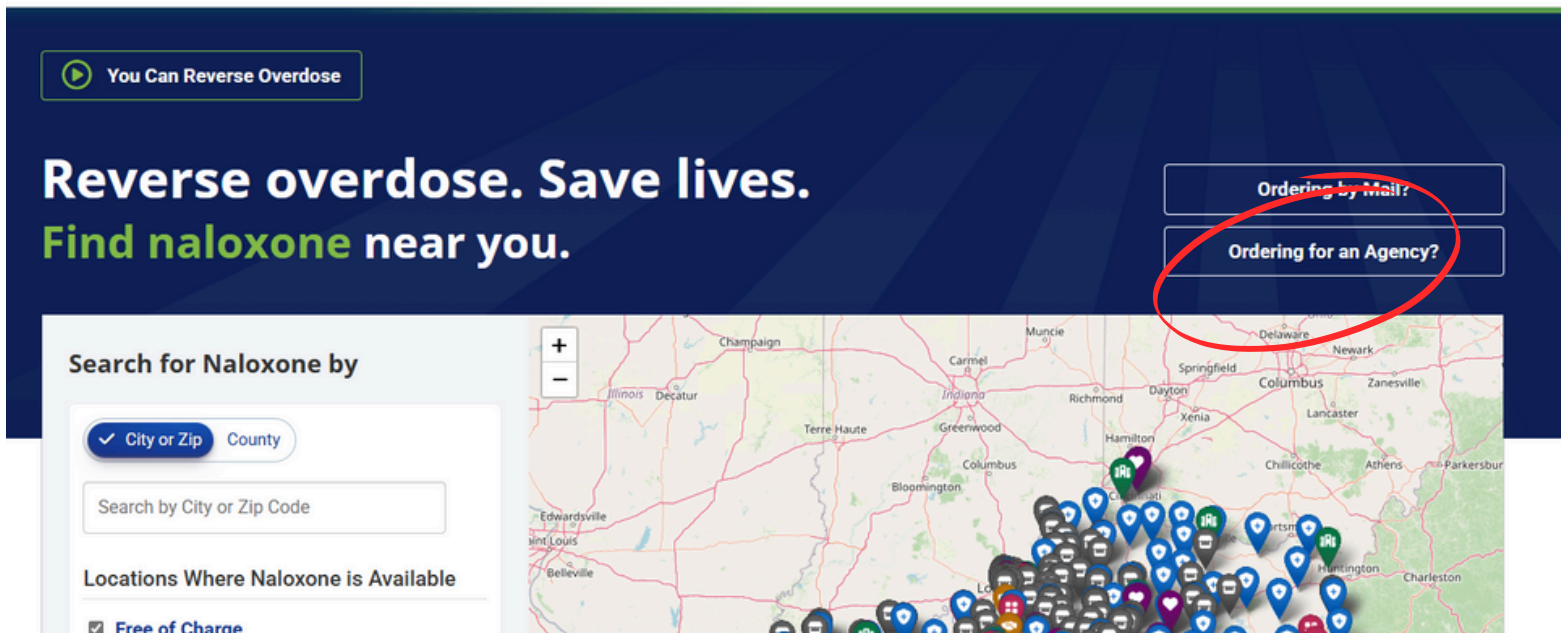
If you are revived from an overdose, you've gotten a second chance, but your chance of overdosing again is very high.

If you need help with substance use any time day or night,  
**1-8338-KYHELP (1-833-859-4357)**  
**<https://findhelpnow.org/ky>**  
or call, text, or chat **988**



# How to Order Naloxone

**Go to:** Find Naloxone Now KY  
**Click on:** Ordering for an Agency



**You Can Reverse Overdose**

**Reverse overdose. Save lives.**  
**Find naloxone near you.**

**Ordering by Mail?**  
**Ordering for an Agency?**

**Search for Naloxone by**

☒ City or Zip ☐ County

Search by City or Zip Code

**Locations Where Naloxone is Available**

☒ Free of Charge

" This form is for Kentucky Agencies looking to receive naloxone to administer or distribute in their community.

Your answers to the questions in this form will direct you to the most appropriate source of naloxone funding for your agency.

Completion of this form does not constitute a request for naloxone. Each grant has it's own request form which this questionnaire will help you locate.

Please read each question and answer accurately to make sure that you are matched to the appropriate source of no-cost naloxone. If you request naloxone from a source not appropriate to your agency, we will have to contact you for clarification resulting in a delay.

If you have questions about this form or any of the grants please email [kore@kphanet.org](mailto:kore@kphanet.org).

**Continue** press Enter ↵

**Review and Click:**  
**Continue**

## Review and Answer: Is your agency located in one of the following counties? Click **Yes** or **No**

1 → Is your agency located in one of the following counties?

\*

Adair	Clay	Henderson	Lewis	Morgan	Rowan
Bath	Elliot	Henry	Lincoln	Muhlenberg	Scott
Bell	Estill	Jackson	Livingston	Nelson	Simpson
Bourbon	Fleming	Jessamine	Logan	Nicholas	Taylor
Boyd	Floyd	Johnson	Magoffin	Owsley	Washington
Boyle	Franklin	Knott	Marion	Pendleton	Wayne
Bracken	Gallatin	Knox	Martin	Perry	Whitley
Breathitt	Garrard	Laurel	Mason	Pike	Wolfe
Breckenridge	Grant	Lawrence	McCreary	Powell	
Carroll	Greenup	Lee	Menifee	Pulaski	
Carter	Harlan	Leslie	Mercer	Robertson	
Clark	Harrison	Letcher	Montgomery	Rockcastle	

☒ A Yes ✓

☐ B No

OK

## Review and Answer: Which of the following best describes your agency? Select the option that applies to your agency.

2 → Which of the following best describes your agency?

- ☐ A Emergency Management Agencies
- ☐ B Emergency Medical Services (EMS)
- ☐ C Fire Departments (Career & Volunteer)
- ☐ D Law Enforcement Agencies (Constable, Fish and Wildlife, Police, Sheriff, State Police, etc.)
- ☐ E Correctional Facilities (Detention Centers, Jails, Prisons, etc.)
- ☐ F Park Ranger Services
- ☐ G Quick Response Teams
- ☐ H Search and Rescue Teams
- ☐ I Public Safety Offices (College, K-12 Schools, Universities)
- ☐ J All Other Agencies (Healthcare, Treatment Providers, Health Departments, Recovery orgs. etc...)

OK

**Review and Answer:** Will this naloxone be used to stock naloxone distribution boxes, vending machines or kiosks? Click **No**

3 → Will this naloxone be used to stock naloxone distribution boxes, vending machines or kiosks?

**NOTE:** This is for naloxone being passively **DISTRIBUTED to the public** through these mechanisms, **NOT** for emergency doses kept with AEDs or publicly available first aid stations.

☐ A Yes

☒ B No

OK

**Review and Answer:** Are you requesting for a Naloxone Leave Behind Program? Click **Yes**

4 → Are you requesting for a Naloxone Leave Behind program?\*

*IF YOUR AGENCY IS NOT EMS, Fire, Law Enforcement, a QRT or a local health department working directly with those entities your answer to this question is NO.*

Naloxone Leave Behind programs are a crucial link between first responders (EMS, Fire, Law Enforcement, Quick Response Teams) and the people who need naloxone most. When first responders place naloxone kits in the hands of the friends and families of people at risk this ensures that overdoses are reversed as rapidly as possible. These programs improve patient outcomes and reduce impacts on our systems of care. If your agency does not yet operate a naloxone leave behind program and would like more information, please contact [harmreduction@ky.gov](mailto:harmreduction@ky.gov)

☒ A Yes

☐ B No

OK

**Click to Continue:** Click **A** then click **Submit**

3 → Your agency may be eligible to receive naloxone from funds managed by The Kentucky Opioid Abatement Advisory Commission (KYOAAC).

☒ A To request naloxone, CLICK HERE FIRST, then click SUBMIT

Submit

## Fill out the Teva 4mg Naloxone Request Form:

This comes from the Teva Opioid Abatement Settlement and what we are using with First Responder Naloxone Leave Behind.

**Kentucky Public Health** *Powered By ReadyOp*

**Find Naloxone Now KY** **Teva 4mg Naloxone Request Form**

This form is to be used by first responder agencies outside of the FR-CARA Program ([www.kphanet.org/frcara](http://www.kphanet.org/frcara)) in KY wishing to receive naloxone. As well as, naloxone distribution to individuals most likely to witness overdose through Quick Response Teams, First Responder Leave Behind Programs, and Naloxone Distribution Boxes.

Date

**AGENCY INFORMATION**

Agency Name  Shipping Address (No PO Box)

City  State  Zip Code  County

Type of Agency

Specify Other

Name of Person Requesting Naloxone   Title

Phone Number  Email Address

**NALOXONE PROCEDURES & REPORTING**

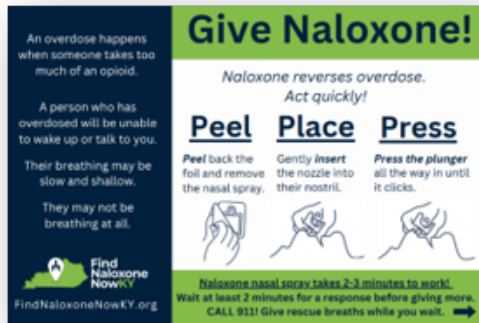
## What you will receive:

- 4 mg naloxone kits
- zippered naloxone pouches (as supplies last)
- resource materials to put into each naloxone leave behind kit - Nasal Spray and Rescue Breathing Instruction Cards



# Optional Kit Contents

## Naloxone Nasal Spray instruction card



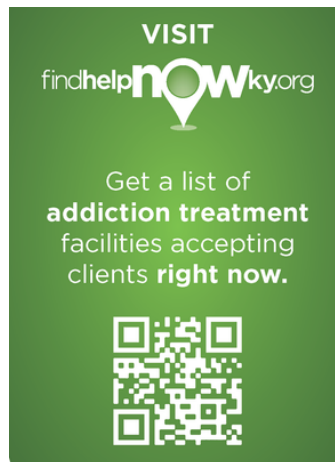
## Rescue Breathing Instruction Card



## Naloxone 4 mg nasal spray units



## SUD Treatment Resource Card



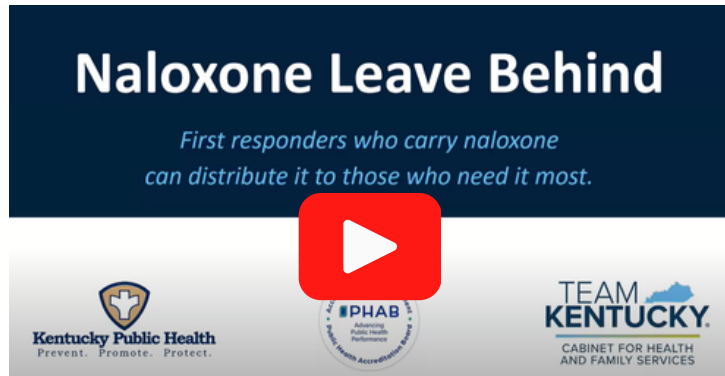
## Overdose Prevention Lifeline Materials



## Sample Kits



# Training Resources



## TRAIN Kentucky

### KDPH EHP From Crisis to Care: Overdose Interventions for First

Opioid Overdose Interventions for First Responders is a one hour overview of current opioid use trends along with evidence-based recommendations for responding to an overdose safely and appropriately.

This training, designed specifically for First Responders offers up-to-date information on current naloxone formulations, the importance of rescue breathing, fentanyl in the unregulated drug supply, and misconceptions around fentanyl exposure risks

One hour of Continuing Education credit is available for Emergency Medical Service (EMS) professionals, nurses, social workers, and Community Health Workers (CHWs).



### You Can Reverse Overdose: Naloxone and Rescue Breathing

You Can Reverse Overdose: Naloxone and Rescue Breathing is an animated video designed in Kentucky. In about four minutes, anyone can learn to respond effectively to an opioid overdose by administering naloxone and giving rescue breaths.

# From Crisis to Care

---

As effective as naloxone is, this lifesaving medicine specifically works by reversing an opioid overdose and does not treat a substance use disorder (SUD). SUDs, including opioid use disorder, are chronic, treatable conditions from which people can recover. People with SUDs have trouble stopping drug use despite the negative consequences. People who survive an opioid overdose are still at risk for continued substance misuse.

This creates a crucial opportunity to connect individuals with treatment options and harm reduction services to support their recovery journey. Below are some statewide resources to consider.

[findhelpnow.org/ky](https://findhelpnow.org/ky)

- Use this website to find facilities and providers who are actively taking new clients. We work with hundreds of mental health treatment, substance use disorder treatment, naloxone, and recovery housing organizations in Kentucky to bring you up-to-date and accurate information and available openings. [View this guide](#) to see details about how to navigate the website.

## KY HELP Statewide Call Center

- For help finding substance use disorder or questions about treatment or recovery, contact the KY HELP Statewide Call Center to speak with a screening and referral specialist Monday through Friday from 7:00 am to 10:00 pm and Saturday and Sunday from 8:30 am to 5:30 pm EST/EDT at 1-877-318-1871.

## Experiencing a Crisis? Call or text 988 or [Live Chat](#)

- Kentuckians experiencing a mental health or substance use crisis can call, chat or text with a trained crisis counselor through the 988 Suicide & Crisis Lifeline. This free, confidential, and anonymous service is available 24/7/365. Connection to additional crisis services will be provided if necessary.

# Additional Resources

---

## Printable Resources

clicking this will download a zip file of resources to your computer



## Public Health and Harm Reduction Resources





CABINET FOR HEALTH  
AND FAMILY SERVICES